

# **EIGHTH ANNUAL GERALD J. FRIEDMAN FELLOWS SYMPOSIUM**

## **Nutrition, Diabetes, and Human Health**

Saturday, June 6, 2015 | 5:30-9:15 pm

The Westin Boston Waterfront

425 Summer Street

Boston, MA 02210

Hosted by:

**Gerald J. Friedman Diabetes Institute**

**Division of Endocrinology and Metabolism**

Lenox Hill Hospital, North Shore – LIJ Health System, New York, NY

**Division of Endocrinology, Diabetes and Metabolism**

Tufts Medical Center, Boston, Massachusetts

**Gerald J. and Dorothy R. Friedman**

**School of Nutrition Science and Policy**

Tufts University, Boston, Massachusetts

Sponsored by the Gerald J. and Dorothy R. Friedman New York Foundation for Medical Research



Gerald J. and Dorothy R.  
Friedman School of  
Nutrition Science and Policy





***The Gerald J. and Dorothy R. Friedman New York Foundation for Medical Research*** is a non-profit, charitable organization dedicated to empowering scientists and clinicians focused on improving health and curing disease. It was established by Gerald J. Friedman, M.D., a lifelong New Yorker who earned his Bachelor's and medical degrees from New York University, and returned there to teach as full professor of medicine for most of his career. After serving as commanding officer of the 222nd Station Hospital in World War II, he joined the staff of Beth Israel Medical Center in New York City, where he stayed until 1993, holding many key positions: Chief of the Gerald J Friedman Medical Intensive Care Unit, Chief of Diabetes and Metabolism, Chief of Metabolism and Endocrinology, and President of the Center's medical board. For more than 30 years, beginning in 1957, he served as the International Medical Director for United Parcel Service.

He embraced this position as he did all challenges in his life with enthusiasm and eagerness to learn as much as he could. He wrote extensively on the management of diabetes, especially in the workplace at a time when many employers discriminated against people with this disease. In addition to being a superb diagnostician, internist, specialist in diabetes, cardiac disease, endocrinology and nutrition, he was active in a variety of related positions, holding top offices in the New York State Society of Industrial Medicine, the New York Occupational Medicine Association, the Industrial Medical Association and the Occupational Health Institute.

Dr. Friedman had a career-long interest in diabetes and held almost every post that existed in the New York Diabetes Association. Together with his wife Dorothy, a Boston-born pianist and recording artist, he helped to create the first summer camp for children with diabetes. Mrs. Friedman also became an active volunteer for Beth Israel Medical Center and the New York Diabetes Association.

For over a decade, the Foundation has generously supported advances in patient care, research and education at select institutions around the country including Beth Israel Hospital NYC where the foundation established the Friedman Diabetes Institute, the Gerald J Friedman Center for Lymphedema Research and Treatment, along with Chairs in Endocrinology, Radiation Oncology, and Pain and Palliative Care. In 2014, Friedman Diabetes Institute moved to Lenox Hill Hospital, in Manhattan's Upper East Side.

The Gerald J. and Dorothy R. Friedman School of Nutrition Science and Policy at Tufts University bears Dr. Friedman's name along with the Gerald J. and Dorothy R. Friedman Program in Diabetes and Metabolism and a Chair in Nephrology at Tufts Medical Center. The Foundation established a Chair in Alzheimer's disease at NYU Hospital, The Ian Copeland Musicians Fund for Melanoma Screening at UCLA's Jonsson Comprehensive Cancer Center and has supported programs in diabetes at UCLA, Mount Sinai Hospital NYC, and Siouxland Medical Education Foundation, as well as brain studies at University of California and Harvard Medical School. Since the inception of these programs, the Foundation has supported training of 44 fellows and graduate students, who have carried forward Dr. Friedman's legacy of dedication and devotion to the health and wellbeing of patients with diabetes, metabolic disease and nutritional disorders through clinical practice and policy change, and the advancement of knowledge through research and education.



## Program

Time	Event/Topic	Presented by
5:30 – 6:00	<b>Friedman Fellows meet with Drs. Jeffrey Flier and Terry Maratos-Flier</b> The Westin Boston Waterfront, Marina Ballroom	Jeffrey Flier, MD Terry Maratos-Flier, MD
6:00 – 7:00	<b>Poster session</b> The Westin Boston Waterfront, Harbor Ballroom	Fellows
7:00 – 7:10	<b>Welcome – Introductory remarks</b> The Westin Boston Waterfront, Harbor Ballroom	Leonid Poretsky, MD Ronald Lechan, MD, PhD
7:10 – 7:30	<b>Counting calories? Diet and Policy Priorities for Obesity Prevention</b> The Westin Boston Waterfront, Harbor Ballroom	Dariusz Mozaffarian, MD, PhD
7:30 – 7:45	<b>Moderated poster session</b> Drs. Terry Maratos-Flier and Jeffrey Flier will choose one or two posters to discuss with the audience.	Jeffrey Flier, MD Terry Maratos-Flier, MD
7:45 – 9:15	<b>Debate &amp; Dinner</b> “Obesity – Nature or Nurture?”	
7:45 – 8:05	Case for Nurture	Terry Maratos-Flier, MD
8:05 – 8:25	Case for Nature	Jeffrey Flier, MD
8:25 – 8:35	Rebuttal	Terry Maratos-Flier, MD
8:35 – 8:45	Rebuttal	Jeffrey Flier, MD
8:45 – 9:00	Audience discussion	
9:00 – 9:15	<b>Adjournment</b>	



*Terry Maratos-Flier, MD  
Associate Master of Francis Weld  
Peabody Society  
Professor of Medicine  
Harvard Medical School*



*Jeffrey S. Flier, MD  
Dean of the Faculty of Medicine  
Caroline Shields Walker  
Professor of Medicine  
Harvard Medical School*

## Posters

Implementation of computer based learning modules in diabetes for first year internal medicine residents: A review of the first year of use	<i>Renee Amori, MD; A. Ferris, MD; R. Paluzzi, MD; B. Simon, MD</i>
Climate change and U.S. consumer food and beverage demand: assessing consumer responses to climate-induced quality changes in tea products, valuation of tea product attributes, and how risk perception and knowledge of climate change influences consumer willingness to pay for tea products	<i>Rebecca Boehm, MS; Sean B. Cash, PhD; Timothy Griffin, PhD; Albert Robbat Jr, PhD; Selena Ahmed, PhD; John Richard Stepp, PhD; Nicole Kfoury, Doctoral Student; Amanda Kowalsick, PhD; Roy Desrochers, PhD; Colin Orians, PhD</i>
Serum sclerostin levels following vitamin D and calcium supplementation	<i>Lisa Ceglia, MD; Jason Nelson, MS; Bess Dawson-Hughes, MD; Anastassios G. Pittas, MD</i>
Control of oral advanced glycation end products (AGEs) by sevelamer carbonate improves glucose metabolism and albuminuria in stage 2-4 diabetic kidney disease (DKD)	<i>Julie Islam, MD; Elena Yubero-Serrano, PhD; Shobha Swamy, PhD; Elliot Rayfield, MD; Wei Cai, PhD; Xiu Chen, PhD; Elizabeth McKee, RD; Anita Kalaj; Friedricke Kruckelmann, MD; Lauren Tirri; Kamala Mantha; Jaime Uribarri, MD; Nikolas Harbord, MD; Ronald Tamler, MD; Mark Woodward, MD</i>
Does irisin have an effect on female reproductive function? Initial in-vitro studies	<i>Julie Islam, MD; Donna Seto-Young, PhD; Martin Lesser, PhD; Zev Rozenwaks, MD; Leonid Poretsky, MD</i>
Presentation of a patient with an unusual composite pheochromocytoma-ganglioneuroblastoma	<i>Iqra Javeed, MD; Arthur S. Trischler, MD; Michael E. Tarnoff, MD; Ronald M. Lechan, MD, PhD</i>
Linking social capital and measure of food security in Tigray, Ethiopia	<i>Jeeyon Janet Kim, MSPH; Karin Christianson; Daniel Maxwell, PhD; Robert Houser, PhD; Bapu Vaitla, PhD</i>
Can household dietary data and AME assumptions accurately predict individual level food consumption in Ethiopia?	<i>Jacqueline Lauer, MPH, MS; Jennifer Coates, PhD; Beatrice Rogers, PhD; Alemzewed Roba, MS; Yohannes Tesema, MS</i>
Core body temperature decreases during weight loss in obesity	<i>Lisa M. Neff, MD, MS; Dinah Zeiss, MS; Mindy Hoffmann, MD; Katherine Lowry; Monica Edwards, MD, MPH; Lewis Landsberg, MD</i>
The effect of weight loss in obesity on brown adipose tissue activity	<i>Lisa M. Neff, MD, MS; Kirsi A. Virtanen, MD, PhD; Mindy Hoffmann, MD; Dinah Zeiss, MS; Katherine Lowry; Monica Edwards, MD, MPH; Lewis Landsberg, MD</i>
Women, food, and power: an examination of women's agricultural production, self-determination, and attitudes toward women in rural Nepal	<i>Corey O'Hara, MS</i>
Increasing access to healthy food on the Navajo Nation: Consumer, producer and retail perspectives	<i>Emily Piltch, MPH</i>
Life cycle environmental impacts of grass-fed beef production in the Northeastern U.S.	<i>Nicole Tichenor, MS; Christian Peters, PhD; Gregory Norris, PhD; Timothy Griffin, PhD</i>
LAT1 mRNA in brain blood vessels is regulated similarly to thyroid hormone transporters, OATP1c1 and MCT8, following lipopolysaccharide administration	<i>Gabor Wittmann, PhD; Petra Mohacsik, MSc; Balazs Gereben, DVM, PhD; Ronald M. Lechan, MD, PhD</i>
POMC mRNA and protein expression in non-neuronal cells of the rat hypothalamus: re-discovering a forgotten signal	<i>Gabor Wittmann, PhD; Ronald M. Lechan, MD, PhD</i>

## Participants: Fellows

<i>Anam Akmal, MD</i>	Friedman Fellow 2013-Present, Tufts Medical Center, Boston, MA
<i>Renee Amori, MD</i>	Assistant Professor of Medicine Drexel University College of Medicine, Philadelphia, PA Friedman Fellow 2005-2007, Tufts Medical Center, Boston, MA
<i>Johanna Y. Andrews Chavez, MMS</i>	PhD Candidate and Friedman Fellow 2011-Present, Friedman School of Nutrition Science and Policy, Tufts University, Boston, MA
<i>Rebecca Boehm, MS</i>	PhD Candidate and Friedman Fellow 2012-Present Friedman School of Nutrition Science and Policy, Tufts University, Boston, MA
<i>Lisa Ceglia, MD</i>	Director, Bone Clinic, Tufts Medical Center Assistant Professor of Medicine, Tufts University, Boston, MA Friedman Fellow 2004-2006, Tufts Medical Center, Boston, MA
<i>Nuha El Sayed, MD</i>	Instructor in Medicine, Harvard Medical School, Boston, MA Friedman Fellow 2007-2009, Tufts Medical Center, Boston, MA
<i>Julie R. Islam, MD</i>	Resident in Medicine, Metropolitan Hospital, New York, NY Friedman Fellow 2013-2014, Friedman Diabetes Institute Mount Sinai Beth Israel, New York, NY
<i>Iqra Javeed, MD</i>	Friedman Fellow 2014-Present, Tufts Medical Center, Boston, MA
<i>Jennifer Kelly, MS, RD</i>	Ph.D. candidate and Friedman Fellow 2014-Present Friedman School of Nutrition Science and Policy, Tufts University, Boston, MA
<i>Janet Jeeyon Kim, MSPH</i>	Friedman Fellow 2013 - Present, Friedman School of Nutrition Science and Policy, Tufts University, Boston, MA
<i>Jacqueline M. Lauer, MPH, MS</i>	Ph.D. Candidate and Friedman Fellow 2014-Present Friedman School of Nutrition Science and Policy, Tufts University, Boston, MA
<i>Lisa Neff, MD, MS</i>	Assistant Professor of Medicine, Northwestern University Division of Endocrinology, Metabolism and Molecular Medicine Northwestern Comprehensive Center on Obesity, Chicago, IL Friedman Fellow 2003-2006, Tufts Medical Center, Boston, MA
<i>Marc Nene, MD</i>	Ph.D. Candidate and Friedman Fellow 2011-Present Friedman School of Nutrition Science and Policy, Tufts University, Boston, MA
<i>Corey O'Hara, MS</i>	Ph.D. Candidate and Friedman Fellow 2013-2014 Friedman School of Nutrition Science and Policy, Tufts University, Boston, MA
<i>Grishma Parikh, MD</i>	Assistant Clinical Professor of Medicine Icahn School of Medicine at Mount Sinai, New York, NY Friedman Fellow 2007 - 2008, Friedman Diabetes Institute Mount Sinai Beth Israel, New York, NY
<i>Radhika Phadke, MD, PhD</i>	Labauer Endocrinology, Burlington, NC Friedman Fellow 2009-2011, Tufts Medical Center, Boston, MA
<i>Emily Piltch, MPH</i>	Ph.D. Candidate and Friedman Fellow 2011-Present Friedman School of Nutrition Science and Policy, Tufts University, Boston, MA
<i>Anastassios G. Pittas, MD, MS</i>	Co-Director, Diabetes Center; Professor of Medicine Tufts Medical Center, Boston, MA Friedman Fellow 2000-2002, Tufts Medical Center, Boston, MA
<i>Florence L. Solages, MD, MSc, MPH</i>	Director, Obesity, Diabetes and Metabolism Center South Florida, Fort Lauderdale, FL Friedman Fellow 2002 - 2004, Tufts Medical Center, Boston, MA
<i>Nicole Tichenor, MS</i>	Ph.D. Candidate and Friedman Fellow 2012-Present Friedman School of Nutrition Science and Policy, Tufts University, Boston, MA
<i>Wen-Yee Tsai, MD</i>	Associated Internal Medicine Group, Oakland, CA Friedman Fellow 2008 - 2010, Tufts Medical Center, Boston, MA
<i>Vorawan Ummaritchot, MD</i>	Diabetes and Endocrinology Associates, Providence, RI Friedman Fellow 2012 - 2014, Tufts Medical Center, Boston, MA
<i>Gabor Wittmann, PhD</i>	Friedman Fellow 2012-Present, Tufts Medical Center, Boston, MA

## Participants: Faculty/Mentors

<i>Gerald Bernstein, MD</i>	Director, Diabetes Management Program, Gerald J. Friedman Diabetes Institute, Mount Sinai Beth Israel Associate Clinical Professor of Medicine, Icahn School of Medicine at Mount Sinai, New York, NY
<i>Andrew S. Greenberg, MD</i>	Director, Obesity and Metabolism Laboratory JM-USDA Human Nutrition Research Center Robert C. and Veronica Atkins Professor in Nutrition and Metabolism Associate Professor, Friedman School of Nutrition Science & Policy Tufts Medical Center, Boston, MA
<i>Timothy S. Griffin</i>	Director, Agriculture Food and Environment Program Friedman School of Nutrition Science and Policy Tufts University, Boston, MA
<i>Ronald Lechan, MD, PhD</i>	Chief, Division of Endocrinology, Professor of Medicine Tufts Medical Center, Boston, MA
<i>Dariusz Mozaffarian, MD, PhD</i>	Dean, Tufts University Friedman School of Nutrition Science & Policy Tufts University, Boston, MA
<i>Anastassios G. Pittas, MD, MS</i>	Co-Director, Diabetes Center; Professor of Medicine Tufts Medical Center, Boston, MA Friedman Fellow 2000-2002, Tufts Medical Center, Boston, MA
<i>Leonid Poretsky, MD</i>	Chief, Division of Endocrinology Associate Chairman for Research, Department of Medicine Professor of Medicine, Hofstra North Shore-LIJ School of Medicine North Shore-LIJ Health System / Lenox Hill Hospital, New York, NY
<i>Beatrice Rogers, PhD</i>	Director, Food Policy and Applied Nutrition Program Friedman School of Nutrition Science and Policy Tufts University, Boston, MA
<i>Jerome Tolbert, MD, PhD</i>	Medical Director, Outreach Program Friedman Diabetes Institute Mount Sinai Beth Israel, New York, NY



# Friedman Fellows

Site and years of fellowship; Current position and institution (where available)



*Anam Akmal, MD*  
Fellow  
Tufts Medical Center, Boston, MA  
2013-2015



*Ala Al Rajabi, MS*  
Friedman School of Nutrition Science and Policy  
Tufts University, Boston, MA  
2007-2008



*Johanna Y. Andrews Chavez, MMS*  
Friedman School of Nutrition Science and Policy  
Tufts University, Boston, MA  
2011-Present



*Renee Amori, MD*  
Tufts Medical Center, Boston, MA  
2005-2007  
Asst Prof of Medicine, Drexel University College of Medicine, Philadelphia, PA



*Takako Araki, MD*  
Friedman Diabetes Institute  
Mount Sinai Beth Israel, New York, NY  
2008-2009  
Faculty Member, UCLA, Los Angeles, CA



*Lucy Bassett, MA, MS*  
Friedman School of Nutrition Science and Policy  
Tufts University, Boston, MA  
2008-2010



*Lisa Ceglia, MD*  
Tufts Medical Center, Boston, MA  
2004-2006  
Director, Bone Clinic  
Tufts University School of Medicine, Boston, MA



*Nuha El Sayed, MD*  
Tufts Medical Center, Boston, MA  
2007-2010  
Instructor in Medicine, Harvard Medical School



*Krisztina Fischer, MD*  
Harvard/UCLA, Los Angeles, CA  
2009-2010



*David C. Gajzer, MD*  
Friedman Diabetes Institute  
Mount Sinai Beth Israel, New York, NY  
2009-2010



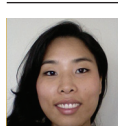
*Radhika Hariharan, MD*  
Tufts Medical Center, Boston, MA  
2001-2003  
Northshore University Health System, Chicago, IL



*Julie R Islam, MD*  
Friedman Diabetes Institute  
Mount Sinai Beth Israel, New York, NY  
2013-2014  
Resident in Medicine, Metropolitan Hospital, NY, NY



*Iqra Javeed, MD*  
Fellow  
Tufts Medical Center, Boston, MA  
2014-2016



*Jeeyon Janet Kim, MSPH*  
Friedman School of Nutrition Science and Policy  
Tufts University, Boston, MA  
2013-2014



*Emily Kuross Vikre, MS*  
Friedman School of Nutrition Science and Policy  
Tufts University, Boston, MA  
2008-2011



*Alexander S. Korb PhD*  
Friedman School of Nutrition Science and Policy  
UCLA, Los Angeles, CA  
2011-2012



*Jacqueline M. Lauer, MPH, MS*  
Friedman School of Nutrition Science and Policy  
Tufts University, Boston, MA  
2014-Present



*Ester Y. Lee, MD*  
Tufts Medical Center, Boston, MA  
2010-2012  
Summitt Medical Group, Morristown, NJ



*Jong-Hwan Lee, PhD*  
Harvard Medical School, Boston, MA  
2008-2009



*Joseph T. Llobrera, MA*  
Friedman School of Nutrition Science and Policy  
Tufts University, Boston, MA  
2007-2009



*Noah Lubowsky, MD*  
Tufts Medical Center  
2006-2008



*Denish Moorthy, MS*  
Friedman School of Nutrition Science and Policy  
Tufts University, Boston, MA  
2005-2006



# Friedman Fellows

Site and years of fellowship; Current position and institution (where available)



*Merle H. Muller, MD*  
Siouxland Medical  
Education Foundation,  
St. Sioux City, IA  
2008–2009



*Ashwin Mysore, MSc*  
Friedman School of Nutrition Science and Policy  
Tufts University, Boston, MA  
2005–2007



*Lisa Neff, MD, MS*  
Tufts Medical Center, Boston, MA  
2003–2006  
Northwestern University Feinberg School of  
Medicine, Chicago, IL



*Marc D. Nene, MD, MS*  
Friedman School of Nutrition Science and Policy  
Tufts University, Boston, MA  
2011–2012



*Rebecca Nemec-Boehm, MSc*  
Friedman School of Nutrition Science and Policy  
Tufts University, Boston, MA  
2012–2013



*Ruslan Novosyadlyy MD, PhD*  
Mount Sinai Medical Center  
2008–2009



*Jennifer Obadia, MS*  
Friedman School of Nutrition Science and Policy  
Tufts University, Boston, MA  
2006–2008



*Corey O'Hara, MS, MALD*  
Friedman School of Nutrition Science and Policy  
Tufts University, Boston, MA  
2013–2014



*Grishma Parikh, MD*  
Friedman Diabetes Institute  
Mount Sinai Beth Israel, New York, NY  
2007–2008  
Asst Clinical Prof of Medicine, Icahn School of  
Medicine at Mount Sinai



*Kamal Patel, MBA, MPH*  
Friedman School of Nutrition Science and Policy  
Tufts University, 2006–2008



*Radhika Phadke, MD*  
Friedman School of Nutrition Science and Policy  
Tufts Medical Center, Boston, MA  
2009–2011  
Clinical Endocrinologist, Cornerstone Endocrinology,  
High Point, NC



*Emily M. Piltch, MPH*  
Friedman School of Nutrition Science and Policy  
Tufts University, Boston, MA  
2011–2012



*Anastassios G. Pittas MD, MS*  
Tufts Medical Center, Boston, MA  
2000–2002  
Co-Director of the Diabetes Center, Professor of  
Medicine, Tufts University School of Medicine

*No photo  
available*

*Chloe Puett, MA*  
Friedman School of Nutrition Science and Policy  
Tufts University, Boston, MA  
2006–2008



*Florence L. Solages, MD, MSc, MPH*  
Tufts Medical Center, Boston, MA  
2001–2004  
Director, Obesity, Diabetes and Metabolism Center of  
South Florida, Fort Lauderdale, FL

*No photo  
available*

*Hilde Steffey, MS*  
Friedman School of Nutrition Science and Policy  
Tufts University, Boston, MA  
2005–2006



*Pauline Surwandhi, MD*  
Friedman Diabetes Institute  
Mount Sinai Beth Israel, New York, NY  
2010–2011



*Nicole Tichenor, MS*  
Friedman School of Nutrition Science and Policy  
Tufts University, Boston, MA  
2012–2013



*Wen-Yee Tsai, MD*  
Tufts Medical Center, Boston, MA  
2008–2010  
Clinical Endocrinologist, Associated Internal  
Medicine Medical Group, Oakland, CA



*Vorawan Ummaritchot, MD*  
Tufts Medical Center, Boston, MA  
2012–2014  
Clinical Endocrinologist, Diabetes and Endocrinology  
Associates, Providence, RI



*Gabor Wittmann, PhD*  
Fellow  
Tufts Medical Center, Boston, MA  
2012–Present



*Paulette M. Yamada-Tamashiro, PhD*  
UCLA, Los Angeles, CA  
2008

## Friedman Mentors



**Lynne Ausman, DSc, RD**  
Director, Biochemical and Molecular Nutrition Program  
Friedman School of Nutrition Science and Policy  
Tufts University, Boston, MA



**Gerald Bernstein, MD**  
Director, Diabetes Management Program  
Gerald J Friedman Diabetes Institute  
Mount Sinai Beth Israel, New York, NY



**Sarah Booth, PhD**  
Chair, Department of Nutrition Sciences  
Friedman School of Nutrition Science and Policy  
Tufts University, Boston, MA



**Alexander Bystritsky, MD, PhD**  
Professor of Psychiatry  
UCLA, Los Angeles, CA



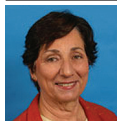
**Sean B Cash, MS, MA, PhD**  
Associate Professor  
Food Policy and Applied Nutrition Program  
Tufts University, Boston, MA



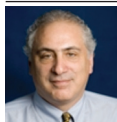
**Jennifer Coates, PhD**  
Friedman School of Nutrition Science and Policy  
Tufts University, Boston, MA



**Pinchas Cohen, MD**  
Dean  
Davis School of Gerontology  
USC, Los Angeles, CA



**Jeanne Goldberg, RD, PhD**  
Director  
Nutrition Communication Program  
Tufts University, Boston, MA



**Andrew S. Greenberg, MD**  
Associate Professor  
Friedman School of Nutrition Science and Policy  
Tufts University, Boston, MA



**Timothy S. Griffin, MS, PhD**  
Director, Agriculture, Food and Environment Program  
Friedman School of Nutrition Science and Policy  
Tufts University, Boston, MA



**Raymond Hyatt, PhD**  
Assistant Professor  
Friedman School of Nutrition Science and Policy  
Tufts University, Boston, MA



**Eileen T. Kennedy, DSc, RD**  
Dean (2009–2012)  
Friedman School of Nutrition Science and Policy  
Tufts University, Boston, MA



**Ronald Lechan, MD, PhD**  
Chief, Division of Endocrinology, Diabetes & Metabolism  
Professor of Medicine  
Tufts Medical Center, Boston, MA



**Kuk-Wha Lee, MD, PhD, FAAP**  
Assistant Professor  
Pediatric Endocrinology  
Mattel Children's Hospital at UCLA, Los Angeles, CA



**Derek LeRoith, MD, PhD**  
Professor of Medicine  
Icahn School of Medicine at Mount Sinai  
New York, NY



**William A. Masters, MA, PhD**  
Professor  
Friedman School of Nutrition Science and Policy  
Tufts University, Boston, MA



**Kathleen Merrigan, PhD**  
2008 Mentor, Formerly, Friedman School of Nutrition  
Science and Policy, Tufts University, Boston, MA



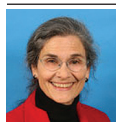
**Dariush Mozaffarian, MD, PhD**  
Dean  
Friedman School of Nutrition Science and Policy  
Tufts University, Boston, MA



**Anastassios G. Pittas, MD, MS**  
Co-Director of the Diabetes Center, Professor of Medicine  
Division of Endocrinology, Diabetes & Metabolism  
Tufts Medical Center, Boston, MA



**Leonid Poretsky, MD**  
Chief, Division of Endocrinology  
Associate Chairman for Research  
Department of Medicine, Lenox Hill Hospital  
Professor of Medicine, Hofstra North Shore-LIJ School of  
Medicine, New York, NY



**Beatrice Rogers, PhD**  
Director, Food Policy and Applied Nutrition Program  
Friedman School of Nutrition Science and Policy  
Tufts University, Boston, MA



**Irwin Rosenberg, MD**  
Professor, Jean Mayer Professor of Nutrition  
Friedman School of Nutrition Science and Policy  
Tufts University, Boston, MA



**Donna Seto-Young, PhD**  
Director (retired)  
Endocrine Research Laboratory  
Mount Sinai Beth Israel, New York, NY



**Jerome Tolbert, MD, PhD**  
Medical Director, Outreach Program  
Gerald J Friedman Diabetes Institute  
Mount Sinai Beth Israel, New York, NY



**Aron Troen, PhD**  
Scientist III, Vitamin Metabolism Laboratory  
Nutrition and Neurocognition Laboratory  
Tufts University, Boston, MA



**Patrick Webb, PhD**  
McFarlane Professor  
Friedman School of Nutrition science and Policy  
Tufts University, Boston, MA



**Parke Wilde, PhD**  
Associate Professor  
Friedman School of Nutrition Science and Policy  
Tufts University, Boston, MA



**Seung-Schik Yoo, PhD, MBA**  
Associate Professor of Radiology  
Brigham and Women's Hospital  
Harvard Medical School, Boston, MA

## Notes

---

