

# **NINTH ANNUAL GERALD J. FRIEDMAN FELLOWS SYMPOSIUM**

## **Nutrition, Diabetes, and Human Health**

**Saturday, June 11, 2016 | 6:00-9:00 pm**  
**Sheraton New Orleans Hotel**  
**500 Canal Street**  
**New Orleans LA 70130**

Hosted by:

**Gerald J. Friedman Diabetes Initiative**  
**Division of Endocrinology and Metabolism**  
Lenox Hill Hospital, Northwell Health, New York, NY

**Division of Endocrinology, Diabetes and Metabolism**  
Tufts Medical Center, Boston, Massachusetts

**Gerald J. and Dorothy R. Friedman**  
**School of Nutrition Science and Policy**  
Tufts University, Boston, Massachusetts

Sponsored by the Gerald J. and Dorothy R. Friedman New York Foundation for Medical Research



Gerald J. and Dorothy R.  
Friedman School of  
Nutrition Science and Policy





**The Gerald J. and Dorothy R. Friedman New York Foundation for Medical Research** is a non-profit, charitable organization dedicated to empowering scientists and clinicians focused on improving health and curing disease. It was established by Gerald J. Friedman, M.D., a lifelong New Yorker who earned his Bachelor's and medical degrees from New York University, and returned there to teach as full professor of medicine for most of his career. After serving as commanding officer of the 222nd Station Hospital in World War II, he joined the staff of Beth Israel Medical Center in New York City, where he stayed until 1993, holding many key positions: Chief of the Gerald J. Friedman Medical Intensive Care Unit, Chief of Diabetes and Metabolism, Chief of Metabolism and Endocrinology, and President of the Center's medical board. For more than 30 years, beginning in 1957, he served as the International Medical Director for United Parcel Service.

He embraced this position as he did all challenges in his life with enthusiasm and eagerness to learn as much as he could. He wrote extensively on the management of diabetes, especially in the workplace at a time when many employers discriminated against people with this disease. In addition to being a superb diagnostician, internist, specialist in diabetes, cardiac disease, endocrinology and nutrition, he was active in a variety of related positions, holding top offices in the New York State Society of Industrial Medicine, the New York Occupational Medicine Association, the Industrial Medical Association and the Occupational Health Institute.

Dr. Friedman had a career-long interest in diabetes and held almost every post that existed in the New York Diabetes Association. Together with his wife Dorothy, a Boston-born pianist and recording artist, he helped to create the first summer camp for children with diabetes. Mrs. Friedman also became an active volunteer for Beth Israel Medical Center and the New York Diabetes Association.

For over a decade, the Foundation has generously supported advances in patient care, research and education at select institutions around the country including Beth Israel Hospital NYC where the foundation established the Friedman Diabetes Institute, the Gerald J. Friedman Center for Lymphedema Research and Treatment, along with Chairs in Endocrinology, Radiation Oncology, and Pain and Palliative Care. In 2014, the Friedman Diabetes Institute moved to Lenox Hill Hospital, in Manhattan's Upper East Side.

The Gerald J. and Dorothy R. Friedman School of Nutrition Science and Policy at Tufts University bears Dr. Friedman's name along with the Gerald J. and Dorothy R. Friedman Program in Diabetes and Metabolism and a Chair in Nephrology at Tufts Medical Center. The Foundation established a Chair in Alzheimer's disease at NYU Hospital, The Ian Copeland Musicians Fund for Melanoma Screening at UCLA's Jonsson Comprehensive Cancer Center and has supported programs in diabetes at UCLA, Mount Sinai Hospital NYC, and Siouxland Medical Education Foundation, as well as brain studies at University of California and Harvard Medical School. Since the inception of these programs, the Foundation has supported training of 49 fellows and graduate students who have carried forward Dr. Friedman's legacy of dedication and devotion to the health and wellbeing of patients with diabetes, metabolic disease and nutritional disorders through clinical practice, policy change, and the advancement of knowledge through research and education.



## Program

Time	Event/Topic	Presented by
6:00 – 6:50	<b>Poster session</b> Sheraton New Orleans Hotel	Friedman Fellows
6:50 – 7:00	<b>Welcome – Introductory remarks</b> Sheraton New Orleans Hotel	Ronald Lechan, MD, PhD Dariush Mozaffarian, MD, DrPH Leonid Poretsky, MD
7:00 – 8:30	<b>Lecture and dinner</b> <i>Unveiling the new (brighter) face of metabolic syndrome</i>	Jesse Roth, MD
8:30 – 9:00	<b>Concluding remarks</b>	
8:30 – 9:00	<b>Adjournment</b>	



Jesse Roth, MD

**Jesse Roth** is an Investigator and Head, Laboratory of Diabetes and Diabetes-Related Disorders, Feinstein Institute for Medical Research, Northwell Health System; Professor, Elmezzi Graduate School of Molecular Medicine; Professor of Medicine, Hofstra Northwell School of Medicine. Dr. Roth began his research career with Sol Berson and Nobel laureate Ros Yalow at the Bronx VA followed by a 26-year term at NIH's Diabetes Institute, as Branch Chief and as Scientific Director. His research has garnered many awards, including multiple ones from the Endocrine Society and from the American Diabetes Association. He has trained many outstanding investigators who contributed immensely to our knowledge about molecular mechanisms of insulin action, glucose metabolism, metabolic syndrome and diabetes.

## Posters

"Molds attack rice – but we don't know what to do." A qualitative study of farming families' perceptions of food safety in Banke, Nepal	<b>Johanna Andrews-Chavez, M.Sc,</b> Shibani Ghosh, PhD, Beatrice L. Rogers, PhD, Gerald Shively, PhD, Kedar Baral, MD, Patrick Webb, PhD
Influence of alkali supplementation on circulating microRNA expression	Lee Margolis, BS, MS, <b>Lisa Ceglia, MD,</b> Donato Rivas, PhD, Roger Fielding, PhD, Bess Dawson-Hughes, MD
The use of the flipped classroom method in a one-year blended learning certificate program in diabetes.	<b>Nuha El Sayed, MD,</b> Dalia Badawi, PharmD, Hilal Al Sayer, MD, Kazem Behbehani, PhD, OBE, Antoine Kaldany, MD
The effects of irisin in reproductive system – Update 2016	<b>Julie R. Islam, MD,</b> Yu Kuei Lin, MD, Sandy Shen MD, Yael Hirth, Donna Seto-Young, PhD, Martin Lesser, PhD, Zev Rozenwaks, MD, Leonid Poretsky, MD
Pheochromocytoma-related cardiomyopathy: A case series	<b>Iqra Javeed, MD,</b> Roman Schumann, MD, Michael E. Tarnoff, MD, Ronald M. Lechan, MD, PhD
An unusual case of Graves' disease coexisting with struma ovarii	<b>Iqra Javeed, MD,</b> Amin Sabet, MD, Jacqueline Kung, MD
Impact of male out-migration on the 'left-behind': Case study of Maulali, Far West Nepal	<b>Jeeyon Janet Kim, MSPH</b>
Focused ultrasound neuromodulation in humans	<b>Alexander S. Korb, PhD,</b> Alexander Bystritsky, MD
One house, two heads: The role of gender at the agriculture-nutrition nexus	<b>Marion S. Min-Barron, MS, MPH</b>
The District Assessment Tool For Anemia (DATA) is useful for anemia programming	<b>Denish Moorthy, MS,</b> Teemar Fisseha, MPH, Danya Sarkar, MHS, Sorrel Namaste, DrPH, MHS
Measuring human brown adipose tissue volume and activity by quantitative and functional MRI	Jie Deng, PhD, <b>Lisa M Neff, MD, MS,</b> Richard Shore, MD, Jonathan Samet, MD, Christina L Sammet, PhD, Paige Nelson, BA, Jennifer Lewandowski, MS, RD, Karen Rychlik, MS, Lewis Landsberg, MD
Agricultural commercialization and diets in Far Western Nepal	<b>Corey O'Hara, MS</b>
Navajo Nation store owner, farmer and consumer perspectives on produce availability at small rural stores	<b>Emily Piltch, MPH,</b> Timothy Griffin, PhD, Sonya Shin, MD, Robert F. Houser, PhD
To D or not to D? Design and rationale of the vitamin D and type 2 diabetes (D2d) study	<b>Anastassios Pittas, MD, MS</b>
Vitamin D status of black and white Americans and changes in vitamin D metabolites after varied doses of vitamin D supplementation	<b>Anastassios Pittas, MD, MS</b>
Paternal migration and child nutrition in Nepal	<b>Akriti Singh, MPH,</b> Robert Houser, PhD, Kenda Cunningham, PhD, Shibani Ghosh, PhD, Patrick Webb, PhD
Directly observed therapy for treatment of hypothyroidism	<b>Scott Sperling, MD,</b> Jacqueline Kung, MD
Variable proopiomelanocortin (POMC) expression in tanycytes and tanycyte-like cells of the adult rat hypothalamus and infundibular stalk	<b>Gabor Wittmann, PhD,</b> Erzsébet Farkas, MS, Csaba Fekete, MD, PhD, Ronald M. Lechan, MD, PhD

## Participants: Fellows

<i>Anam Akmal, MD</i>	Providence Medical Group, Olympia, WA Friedman Fellow 2013–2015, Tufts Medical Center, Boston, MA
<i>Johanna Y. Andrews Chavez, MSc</i>	Doctoral Candidate, Junior Researcher, Feed the Future Innovation Laboratory for Nutrition Friedman Fellow 2011–present, Gerald J. and Dorothy R. Friedman School of Nutrition Science and Policy, Tufts University, Boston, MA
<i>Lisa Ceglia, MD</i>	Director, Bone Clinic, Tufts Medical Center Assistant Professor of Medicine, Tufts University, Boston, MA Friedman Fellow 2004–2006, Tufts Medical Center, Boston, MA
<i>Nuha El Sayed, MD</i>	Director, International Training Programs, Associate Director, Obesity Clinical Program, Joslin Diabetes Center Associate Director, International Initiatives, Harvard Medical Faculty Physicians Instructor in Medicine, Harvard Medical School, Boston, MA Friedman Fellow 2007–2009, Tufts Medical Center, Boston, MA
<i>Julie R. Islam, MD</i>	Resident in Medicine, Metropolitan Hospital, New York, NY Friedman Fellow 2013–2014, Friedman Diabetes Institute Mount Sinai Beth Israel, New York, NY
<i>Iqra Javeed, MD</i>	Friedman Fellow 2014–2016, Tufts Medical Center, Boston, MA
<i>Jeeyon Janet Kim, MSPH</i>	Doctoral Candidate, Friedman Fellow 2013–2014 Gerald J. and Dorothy R. Friedman School of Nutrition Science and Policy Tufts University, Boston, MA
<i>Alexander S. Korb, PhD</i>	Postdoctoral Scholar, Friedman Fellow 2011–2012 University of California, Los Angeles, CA
<i>Marion S. Min-Barron, MS, MPH</i>	Friedman Fellow 2015–present, Gerald J. and Dorothy R. Friedman School of Nutrition Science and Policy, Tufts University, Boston, MA
<i>Denish Moorthy, MS</i>	Technical Advisor, Micronutrients, USAID-Strengthening Partnerships, Results, and Innovation in Nutrition Globally (SPRING) Project, Arlington, VA Friedman Fellow 2005–2006, Gerald J. and Dorothy R. Friedman School of Nutrition Science and Policy, Tufts University, Boston, MA
<i>Merle H. Muller, MD</i>	Assistant Professor of Family and Community Medicine, Southern Illinois University School of Medicine Associate Director, Southern Illinois University Quincy Sports Medicine Fellowship Program, Quincy, IL Friedman Fellow 2008–2009, Siouxland Medical Education Foundation, Sioux City, Iowa
<i>Lisa Neff, MD, MS</i>	Assistant Professor of Medicine, Northwestern University Division of Endocrinology, Metabolism and Molecular Medicine Northwestern Comprehensive Center on Obesity, Chicago, IL Friedman Fellow 2003–2006, Tufts Medical Center, Boston, MA
<i>Corey O'Hara, MS</i>	Doctoral Candidate, Friedman Fellow 2013–2014, Gerald J. and Dorothy R. Friedman School of Nutrition Science and Policy, Tufts University, Boston, MA
<i>Grishma Parikh, MD</i>	Assistant Clinical Professor of Medicine, Icahn School of Medicine at Mount Sinai, New York, NY Friedman Fellow 2007–2008, Friedman Diabetes Institute, Mount Sinai Beth Israel, New York, NY

## Participants: Fellows

<i>Emily Piltch, MPH, PhD</i>	Doctoral Candidate, Friedman Fellow 2011–2012, Gerald J. and Dorothy R. Friedman School of Nutrition Science and Policy, Tufts University, Boston, MA
<i>Anastassios G. Pittas, MD, MS</i>	Co-Director, Diabetes Center; Professor of Medicine Tufts University School of Medicine, Boston, MA Friedman Fellow 2000–2002, Tufts Medical Center, Boston, MA
<i>Akriti Singh, MPH</i>	Doctoral Candidate, Friedman Fellow 2015–present, Gerald J. and Dorothy R. Friedman School of Nutrition Science and Policy, Tufts University, Boston, MA
<i>Scott Sperling, MD</i>	Friedman Fellow 2015–2017 Tufts Medical Center, Boston, MA
<i>Wen-Yee Tsai, MD</i>	Stanford University Health Alliance, Oakland, CA Friedman Fellow 2008–2010, Tufts Medical Center, Boston, MA
<i>Vorawan Ummaritchot, MD</i>	Diabetes and Endocrinology Associates, Providence, RI Friedman Fellow 2012–2014, Tufts Medical Center, Boston, MA
<i>Gabor Wittmann, PhD</i>	Instructor, Tufts University School of Medicine, Boston, MA Friedman Fellow 2012–2015, Tufts Medical Center, Boston, MA

## Participants: Faculty/Mentors

<i>Gerald Bernstein, MD, FACP</i>	Past President, American Diabetes Association Coordinator, Friedman Diabetes Initiative Division of Endocrinology Lenox Hill Hospital Northwell Health, New York, NY
<i>Andrew S. Greenberg, MD</i>	Associate Professor, Gerald J. and Dorothy R. Friedman School of Nutrition Science and Policy, Tufts University Director, Obesity and Metabolism Laboratory, Boston, MA
<i>Ronald Lechan, MD, PhD</i>	Chief, Division of Endocrinology, Diabetes and Metabolism Professor of Medicine Tufts Medical Center, Boston, MA
<i>Dariusz Mozaffarian, MD, DrPH</i>	Dean, Tufts University Friedman School of Nutrition Science & Policy, Tufts University, Boston, MA
<i>Anastassios G. Pittas, MD, MS</i>	Co-Director, Diabetes Center; Professor of Medicine Tufts University School of Medicine, Boston, MA Friedman Fellow 2000–2002, Tufts Medical Center, Boston, MA
<i>Leonid Poretsky, MD</i>	Chief, Division of Endocrinology Associate Chairman for Research Department of Medicine, Lenox Hill Hospital Professor of Medicine, Hofstra Northwell School of Medicine, New York, NY



# Friedman Fellows

Site and years of fellowship; Current position and institution (where available)



**Anam Akmal, MD**  
Providence Medical Group, Olympia, WA  
Friedman Fellow 2013–2015  
Tufts Medical Center, Boston, MA



**Ala Al Rajabi, MS**  
Friedman Fellow 2007–2008  
Friedman School of Nutrition Science and Policy  
Tufts University, Boston, MA



**Renee Amori, MD**  
Assistant Professor of Medicine, Drexel University  
College of Medicine, Philadelphia, PA  
Friedman Fellow 2005–2007  
Tufts Medical Center, Boston MA



**Johanna Y. Andrews Chavez, MSc**  
Doctoral Candidate, Junior Researcher, Feed the  
Future Innovation Laboratory for Nutrition  
Friedman Fellow 2011–present  
Friedman School of Nutrition Science and Policy  
Tufts University, Boston, MA



**Takako Araki, MD**  
Staff Physician, Cedars Sinai Medical Center,  
Los Angeles, CA  
Friedman Fellow 2008–2009  
Friedman Diabetes Institute  
Mount Sinai Beth Israel, New York, NY



**Lucy Bassett, MA, MS**  
Friedman Fellow 2008–2010  
Friedman School of Nutrition Science and Policy  
Tufts University, Boston, MA



**Lisa Ceglia, MD, MS**  
Director, Bone Clinic, Tufts Medical Center  
Assistant Professor of Medicine, Tufts University,  
Boston, MA  
Friedman Fellow 2004–2006  
Tufts Medical Center, Boston, MA



**Nuha El Sayed, MD**  
Director, International Training Programs, Associate  
Director, Obesity Clinical Program, Joslin Diabetes  
Center; Associate Director, International Initiatives,  
Harvard Medical Faculty Physicians; Instructor in  
Medicine, Harvard Medical School, Boston, MA  
Friedman Fellow 2007–2009  
Tufts Medical Center, Boston, MA



**Jamie L. Fierstein, MS**  
Friedman Fellow 2015–present  
Friedman School of Nutrition Science and Policy,  
Tufts University, Boston, MA



**Krisztina Fischer, MD**  
Friedman Fellow 2009–2010  
Harvard/UCLA, Los Angeles, CA



**David C. Gajzer, MD**  
Resident in Anatomic and Clinical Pathology,  
University of Miami/Jackson Memorial Hospital,  
Miami, FL  
Friedman Fellow 2009–2010  
Friedman Diabetes Institute  
Mount Sinai Beth Israel, New York, NY



**Radhika Hariharan, MD**  
Northshore University Health System, Chicago, IL  
Friedman Fellow 2001–2003  
Tufts Medical Center, Boston, MA



**Julie R. Islam, MD**  
Resident in Medicine, Metropolitan Hospital, NY, NY  
Friedman Fellow 2013–2014  
Friedman Diabetes Institute  
Mount Sinai Beth Israel, New York, NY



**Mehreen S. Ismail, MPH**  
Friedman Fellow 2015–present  
Friedman School of Nutrition Science and Policy  
Tufts University, Boston, MA



**Iqra Javeed, MD**  
Friedman Fellow 2014–2016  
Tufts Medical Center, Boston, MA



**Jennifer M. Kelly, MS, RD**  
Friedman Fellow 2015–present  
Friedman School of Nutrition Science and Policy,  
Tufts University, Boston, MA



**Jeeyon Janet Kim, MSPH**  
Doctoral Candidate, Friedman Fellow 2013–2014  
Friedman School of Nutrition Science and Policy,  
Tufts University, Boston, MA



**Emily Kuross Vikre, MS**  
Friedman Fellow 2008–2011  
Friedman School of Nutrition Science and Policy  
Tufts University, Boston, MA



**Alexander S. Korb, PhD**  
Postdoctoral Scholar; Friedman Fellow 2011–2012  
University of California, Los Angeles, CA



**Jacqueline M. Lauer, MPH, MS**  
Friedman Fellow 2014–present  
Friedman School of Nutrition Science and Policy  
Tufts University, Boston, MA



**Esther Y. Lee, MD**  
Assistant Professor of Medicine, Emory University  
School of Medicine, Atlanta, GA  
Friedman Fellow 2010–2012  
Tufts Medical Center, Boston, MA



**Jong-Hwan Lee, PhD**  
Friedman Fellow 2008–2009  
Harvard Medical School, Boston, MA



**Joseph T. Llobrera, MA**  
Friedman Fellow 2007–2009  
Friedman School of Nutrition Science and Policy  
Tufts University, Boston, MA



**Noah Lubowsky, MD**  
Premier Medical Associates, Pittsburgh, PA  
Friedman Fellow 2006–2008  
Tufts Medical Center, Boston MA



**Marion Min-Barron, MS, MPH**  
Friedman Fellow 2015–present  
Friedman School of Nutrition Science and Policy,  
Tufts University, Boston, MA



# Friedman Fellows

Site and years of fellowship; Current position and institution (where available)



## Denish Moorthy, MS

Technical Advisor, Micronutrients, USAID-Strengthening Partnerships, Results, and Innovation in Nutrition Globally (SPRING) project, Arlington, VA  
Friedman Fellow 2005–2006  
Friedman School of Nutrition Science and Policy,  
Tufts University, Boston, MA



## Merle H. Muller, MD

Assistant Professor of Family and Community Medicine, Southern Illinois University School of Medicine; Associate Director, Southern Illinois University Quincy Sports Medicine Fellowship Program, Quincy, IL  
Friedman Fellow 2008–2009  
Siouxland Medical Education Foundation,  
Sioux City, IA



## Ashwin Mysore, MSc

Friedman Fellow 2005–2009  
Friedman School of Nutrition Science and Policy  
Tufts University, Boston, MA



## Lisa Neff, MD, MS

Assistant Professor of Medicine, Northwestern University Division of Endocrinology, Metabolism and Molecular Medicine, Northwestern Comprehensive Center on Obesity, Chicago, IL  
Friedman Fellow 2003–2006  
Tufts Medical Center, Boston, MA



## Marc D. Nene, MD, MS

Friedman Fellow 2011–2012  
Friedman School of Nutrition Science and Policy  
Tufts University, Boston, MA



## Rebecca Nemec-Boehm, MSc

Friedman Fellow 2012–2013  
Friedman School of Nutrition Science and Policy  
Tufts University, Boston, MA



## Ruslan Novosyadlyy MD, PhD

Friedman Fellow 2008–2009  
Mount Sinai Medical Center, New York, NY



## Jennifer Obadia, MS

Friedman Fellow 2006–2008  
Friedman School of Nutrition Science and Policy  
Tufts University, Boston, MA



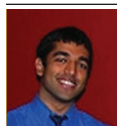
## Corey O'Hara, MS, MALD

Doctoral Candidate, Friedman Fellow 2013–2014  
Friedman School of Nutrition Science and Policy,  
Tufts University, Boston, MA



## Grishma Parikh, MD

Assistant Clinical Professor of Medicine, Icahn School of Medicine at Mount Sinai, New York, NY  
Friedman Fellow 2007–2008  
Friedman Diabetes Institute  
Mount Sinai Beth Israel, New York, NY



## Kamal Patel, MBA, MPH

Friedman Fellow 2006–2008  
Friedman School of Nutrition Science and Policy  
Tufts University, MA



## Radhika Phadke, MD

Cornerstone Endocrinology, High Point, NC  
Friedman Fellow 2009–2011  
Friedman School of Nutrition Science and Policy  
Tufts Medical Center, Boston, MA



## Emily M. Piltch, MPH

Doctoral Candidate, Friedman Fellow 2011–2012  
Friedman School of Nutrition Science and Policy  
Tufts University, Boston, MA



## Anastassios G. Pittas MD, MS

Co-Director of the Diabetes Center, Prof of Medicine,  
Tufts University School of Medicine, Boston, MA  
Friedman Fellow 2000–2002  
Tufts Medical Center, Boston, MA

No photo  
available

## Chloe Puett, MA

Friedman Fellow 2006–2008  
Friedman School of Nutrition Science and Policy  
Tufts University, Boston, MA



## Akriti Singh

Doctoral Candidate, Friedman Fellow 2015–present  
Friedman School of Nutrition Science and Policy,  
Tufts University, Boston, MA



## Florence L. Solages, MD, MSc, MPH

Director, Obesity, Diabetes and Metabolism Center of  
South Florida, Fort Lauderdale, FL  
Friedman Fellow 2001–2004  
Tufts Medical Center, Boston, MA



## Scott Sperling, MD

Friedman Fellow 2015–2017  
Tufts Medical Center, Boston, MA

No photo  
available

## Hilde Steffey, MS

Friedman Fellow 2005–2006  
Friedman School of Nutrition Science and Policy  
Tufts University, Boston, MA



## Pauline Suwandhi, MD

Assistant Professor of Medicine,  
Albert Einstein College of Medicine, New York, NY  
Friedman Fellow 2010–2011  
Friedman Diabetes Institute  
Mount Sinai Beth Israel, New York, NY



## Nicole Tichenor, MS

Friedman Fellow 2012–2013  
Friedman School of Nutrition Science and Policy  
Tufts University, Boston, MA



## Wen-Yee Tsai, MD

Stanford University Health Alliance, Oakland, CA  
Friedman Fellow 2008–2010  
Tufts Medical Center, Boston, MA



## Vorawan Ummaritchot, MD

Diabetes and Endocrinology Associates,  
Providence, RI  
Friedman Fellow 2012–2014  
Tufts Medical Center, Boston, MA



## Gabor Wittmann, PhD

Instructor, Tufts University School of Medicine,  
Boston, MA  
Friedman Fellow 2012–2015  
Tufts Medical Center, Boston, MA



## Paulette M. Yamada-Tamashiro, PhD

Friedman Fellow 2008  
UCLA, Los Angeles, CA

## Friedman Mentors



**Lynne Ausman, DSc, RD**  
Director, Biochemical and Molecular Nutrition Program  
Friedman School of Nutrition Science and Policy  
Tufts University, Boston, MA



**Gerald Bernstein, MD**  
Past President, American Diabetes Association  
Coordinator, Friedman Diabetes Initiative  
Division of Endocrinology, Lenox Hill Hospital,  
Northwell Health, New York, NY



**Sarah Booth, PhD**  
Chair, Department of Nutrition Sciences  
Friedman School of Nutrition Science and Policy  
Tufts University, Boston, MA



**Alexander Bystriksky, MD, PhD**  
Professor of Psychiatry  
UCLA, Los Angeles, CA



**Sean B Cash, MS, MA, PhD**  
Associate Professor  
Food Policy and Applied Nutrition Program  
Tufts University, Boston, MA



**Jennifer Coates, PhD**  
Friedman School of Nutrition Science and Policy  
Tufts University, Boston, MA



**Pinchas Cohen, MD**  
Dean  
Davis School of Gerontology  
USC, Los Angeles, CA



**Jeanne Goldberg, RD, PhD**  
Director  
Nutrition Communication Program  
Tufts University, Boston, MA



**Andrew S. Greenberg, MD**  
Associate Professor  
Friedman School of Nutrition Science and Policy  
Tufts University, Boston, MA



**Timothy S. Griffin, MS, PhD**  
Director, Agriculture, Food and Environment Program  
Friedman School of Nutrition Science and Policy  
Tufts University, Boston, MA



**Raymond Hyatt, PhD**  
Assistant Professor  
Friedman School of Nutrition Science and Policy  
Tufts University, Boston, MA



**Eileen T. Kennedy, DSc, RD**  
Dean (2009–2012)  
Friedman School of Nutrition Science and Policy  
Tufts University, Boston, MA



**Stefania Lamon-Fava, PhD**  
Associate Professor, Friedman School of Nutrition  
Science and Policy, Tufts University



**Ronald Lechan, MD, PhD**  
Chief, Division of Endocrinology, Diabetes & Metabolism  
Professor of Medicine  
Tufts Medical Center, Boston, MA



**Kuk-Wha Lee, MD, PhD, FAAP**  
Assistant Professor  
Pediatric Endocrinology  
Mattel Children's Hospital at UCLA, Los Angeles, CA



**Derek LeRoith, MD, PhD**  
Professor of Medicine  
Icahn School of Medicine at Mount Sinai  
New York, NY



**William A. Masters, MA, PhD**  
Professor  
Friedman School of Nutrition Science and Policy  
Tufts University, Boston, MA



**Daniel Maxwell, PhD**  
Professor, Friedman School of Nutrition Science and  
Policy, Tufts University



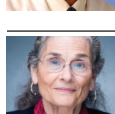
**Dariush Mozaffarian, MD, DrPH**  
Dean  
Friedman School of Nutrition Science and Policy  
Tufts University, Boston, MA



**Anastassios G. Pittas, MD, MS**  
Co-Director of the Diabetes Center, Professor of Medicine  
Division of Endocrinology, Diabetes & Metabolism  
Tufts Medical Center, Boston, MA



**Leonid Poretsky, MD**  
Chief, Division of Endocrinology, Associate Chairman  
for Research, Department of Medicine  
Director, Friedman Diabetes Initiative, Lenox Hill Hospital  
Professor of Medicine  
Hofstra Northwell School of Medicine, New York, NY



**Beatrice Rogers, PhD**  
Director, Food Policy and Applied Nutrition Program  
Friedman School of Nutrition Science and Policy  
Tufts University, Boston, MA



**Irwin Rosenberg, MD**  
Professor, Jean Mayer Professor of Nutrition  
Friedman School of Nutrition Science and Policy  
Tufts University, Boston, MA



**Donna Seto-Young, PhD**  
Director (retired)  
Endocrine Research Laboratory  
Mount Sinai Beth Israel, New York, NY



**Jerome Tolbert, MD, PhD**  
Medical Director, Outreach Program  
Gerald J. Friedman Diabetes Institute  
Mount Sinai Beth Israel, New York, NY



**Aron Troen, PhD**  
Scientist III, Vitamin Metabolism Laboratory  
Nutrition and Neurocognition Laboratory  
Tufts University, Boston, MA



**Patrick Webb, PhD**  
McFarlane Professor  
Friedman School of Nutrition Science and Policy  
Tufts University, Boston, MA



**Parke Wilde, PhD**  
Associate Professor  
Friedman School of Nutrition Science and Policy  
Tufts University, Boston, MA



**Seung-Schik Yoo, PhD, MBA**  
Associate Professor of Radiology  
Brigham and Women's Hospital  
Harvard Medical School, Boston, MA

## Guest Presenters

### 2012 Symposium



*Mario Varon, BS*  
Design for Poverty  
Alleviation

### 2011 Symposium



*Vanessa Sy-Po, MD*  
Friedman Diabetes  
Institute/Mount Sinai  
Beth Israel

### 2010 Symposium



*Yvonne C. Fierz, MD*  
Mount Sinai Medical  
Center



*Byoung-Kyong  
Min, PhD*  
Harvard Medical School

## Notes

